

# 3. Time Signatures

The **Time Signature** appears at the beginning of a piece of music. It is made up of two numbers.



The top number indicates the number of beats per measure.  
The bottom number indicates which note will get one beat.

In  $\frac{4}{4}$  time there are four beats in each measure.

- A **quarter note** (♩) = 1 beat
- A **half note** (♭) = 2 beats
- A **whole note** (♩) = 4 beats

1. Write a time signature after the clef sign, write in the beats below the notes, and draw the missing bar lines.



example: 1   2 3 4   \_\_\_\_\_

In  $\frac{3}{4}$  time there are three beats in each measure.  
The quarter note gets one beat.

A dot after a note adds 50% to it's value.  
The dotted half note gets three beats. ♩. = 3 beats

- Rhythmic values
- A quarter note (♩) = 1 beat
  - A half note (♭) = 2 beats
  - A dotted half note (♩.) = 3 beats

2. Write a time signature after the clef sign, write in the beats below the notes, and draw the missing bar lines.



example: 1   2   3   \_\_\_\_\_

In  $\frac{6}{8}$  time there are six beats in each measure.  
The eighth note gets one beat.

- Rhythmic values
- A sixteenth note (♩) = 1/2 beat
  - An eighth note (♩) = 1 beat
  - A quarter note (♭) = 2 beats
  - A dotted quarter note (♭.) = 3 beats
  - A dotted half note (♩.) = 6 beats

3. Write a  $\frac{6}{8}$  time signature after the clef sign and write the beats below the notes.



5. Write in the beats below the notes and add the missing barlines.





# Time Signatures Worksheet 1

Name .....

## Pick - A - Bar

Complete the bars of music by choosing notes and rests from the boxes in the middle of the page.  
Draw a line through each box of notes and rests as you use it. You may use each box only once.

--	--	--	--	--	--


--	--	--	--	--	--



# Missing Bar Lines

Look carefully at the time signatures and draw the bar lines in their proper places.

1.  $\frac{2}{4}$  Musical notation with missing bar lines.

2.  $\frac{3}{4}$  Musical notation with missing bar lines.

3.  $\frac{4}{4}$  Musical notation with missing bar lines.

4.  $\frac{3}{8}$  Musical notation with missing bar lines.

5.  $\frac{6}{8}$  Musical notation with missing bar lines.

6.  $\frac{4}{4}$  Musical notation with missing bar lines.

7.  $\frac{3}{4}$  Musical notation with missing bar lines.

8.  $\frac{2}{4}$  Musical notation with missing bar lines.

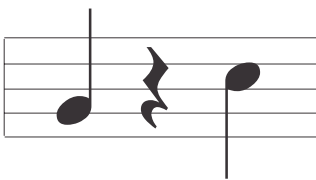


# QUIZ

## Tick the correct time signatures

Choose the correct time signature for each bar of music. Tick the box next to it.

- 3/4
- 2/4
- 4/4



- 3/4
- 2/4
- 4/4



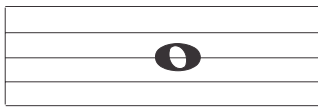
- 3/4
- 2/4
- 4/4



- 3/4
- 2/4
- 4/4



- 3/4
- 2/4
- 4/4



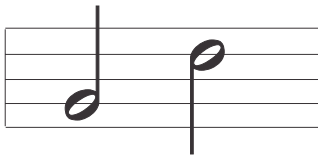
- 3/4
- 2/4
- 4/4



- 3/4
- 2/4
- 4/4



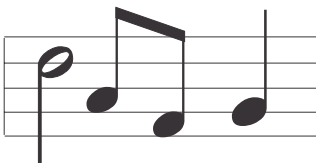
- 3/4
- 2/4
- 4/4



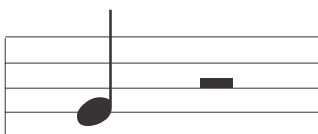
- 3/4
- 2/4
- 4/4



- 3/4
- 2/4
- 4/4



- 3/4
- 2/4
- 4/4



- 3/4
- 2/4
- 4/4



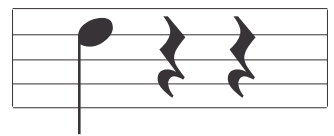
- 3/4
- 2/4
- 4/4



- 3/4
- 2/4
- 4/4



- 3/4
- 2/4
- 4/4



- 3/4
- 2/4
- 4/4



- 3/4
- 2/4
- 4/4



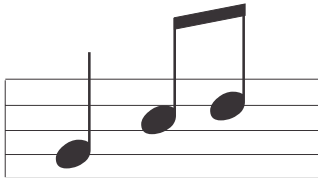
- 3/4
- 2/4
- 4/4



- 3/4
- 2/4
- 4/4



- 3/4
- 2/4
- 4/4



- 3/4
- 2/4
- 4/4

