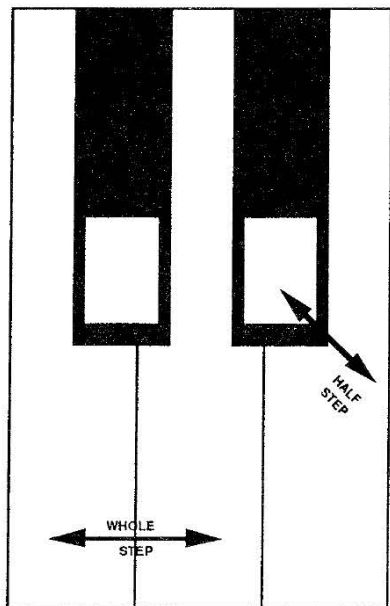


**FUN SHEET**  
**WHOLE STEPS AND HALF STEPS**

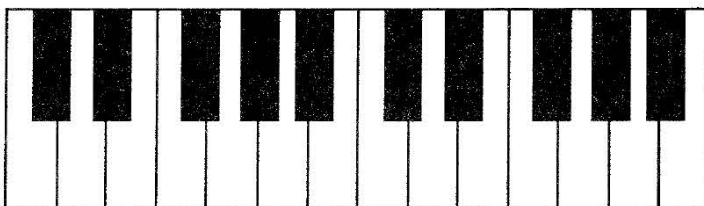


A. A **WHOLE STEP** skips **ONE KEY**  
(black or white)!

A **HALF STEP** is the **VERY NEXT**  
**KEY**—either up or down!

Look at the little keyboard below to  
answer the **WHOLE** and **HALF STEP**  
**QUESTIONS**. Write “W” for **WHOLE**  
and “H” for **HALF**.

1. From D to E is a \_\_\_\_\_ step.  
(W or H?)
2. From E<sup>b</sup> to F is a \_\_\_\_\_ step.  
(W or H?)
3. From G<sup>#</sup> to A is a \_\_\_\_\_ step.  
(W or H?)
4. From B to C is a \_\_\_\_\_ step.  
(W or H?)
5. From D<sup>b</sup> to E<sup>b</sup> is a \_\_\_\_\_ step.  
(W or H?)
6. From F down to E is a \_\_\_\_\_ step.  
(W or H?)
7. From G<sup>#</sup> to A<sup>#</sup> is a \_\_\_\_\_ step.  
(W or H?)
8. From A to A<sup>#</sup> is a \_\_\_\_\_ step.  
(W or H?)
9. From E to F<sup>#</sup> is a \_\_\_\_\_ step.  
(W or H?)

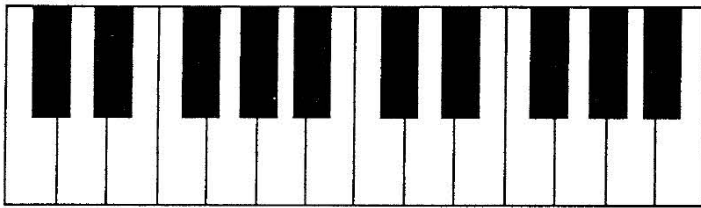


**B. GETTING BETTER WITH WHOLE AND HALF STEPS!**

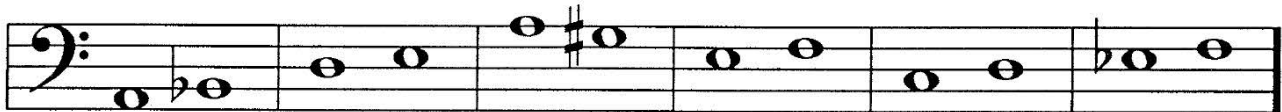
1. Look at the little keyboard below to help you answer these staff-note questions.

If the notes are a **WHOLE STEP** apart write "W."

If the notes are a **HALF STEP** apart write "H."



W      \_\_\_\_\_      \_\_\_\_\_      \_\_\_\_\_      \_\_\_\_\_      \_\_\_\_\_



\_\_\_\_\_      \_\_\_\_\_      \_\_\_\_\_      \_\_\_\_\_      \_\_\_\_\_      \_\_\_\_\_

2. NOW THAT YOU HAVE BECOME GREAT AT **WHOLE AND HALF STEPS**, YOU ARE READY TO STUDY **SCALES**. **SCALES** ARE MADE OF A PATTERN OF **WHOLE AND HALF STEPS!**      **EASY?!**

THIS IS THE MAJOR SCALE PATTERN. **MEMORIZE IT!**

W   W   H   W   W   W   H

**YEA!!**