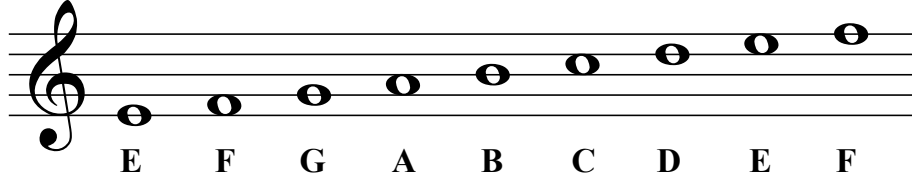


The Staff - Treble Clef

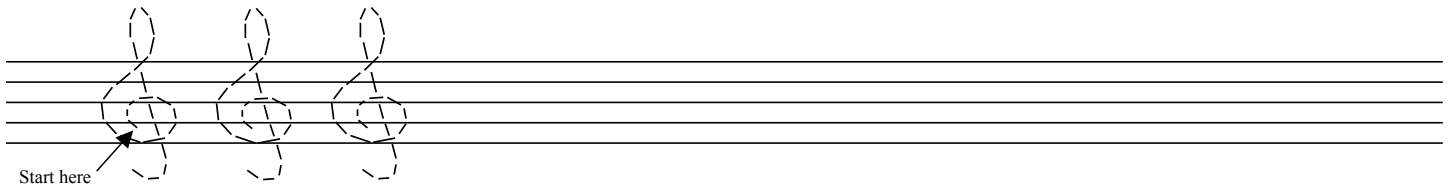
A **clef** appears at the beginning of each staff. The clef shown here is a **treble clef**.



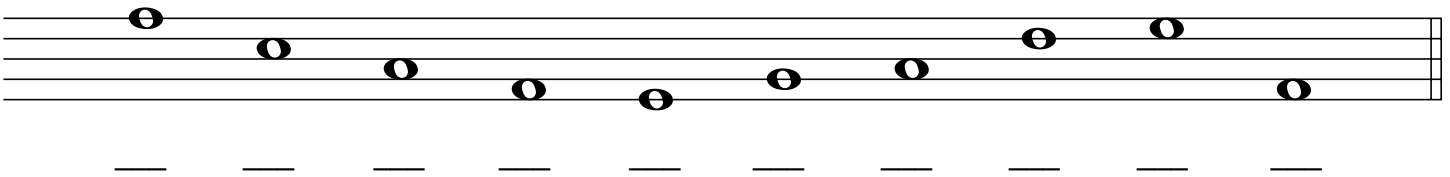
Each note on the treble clef staff has a letter name.



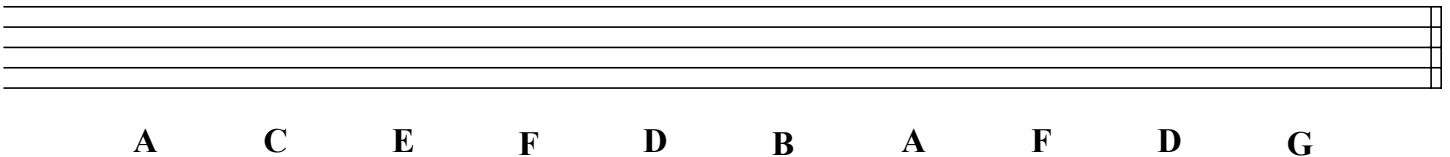
1. Practice drawing the treble clef sign by tracing over the guidelines. Draw five more in the remaining space.



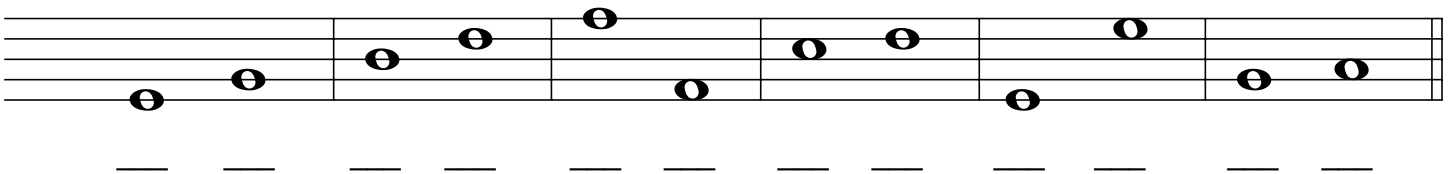
2. Draw a treble clef at the beginning of the staff and write the letter name of each note.



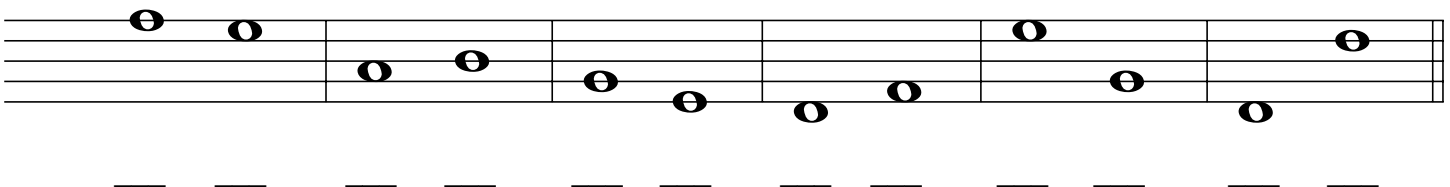
3. Draw the treble clef at the beginning of the staff and then draw the notes indicated.
If a note can be drawn in more than one place on the staff, choose which one you want to draw.



4. Draw the treble clef at the beginning of the staff.
Write the letter name for each note, then circle the higher note in each pair.



5. Draw the treble clef at the beginning of the staff.
Write the letter name for each note, then circle the lower note in each pair.

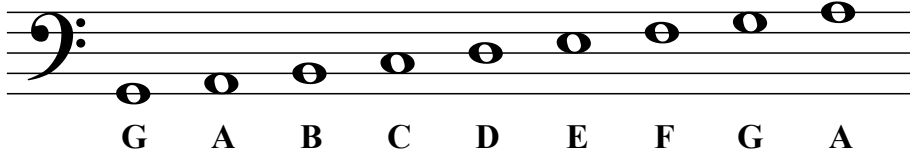


The Staff - Bass Clef

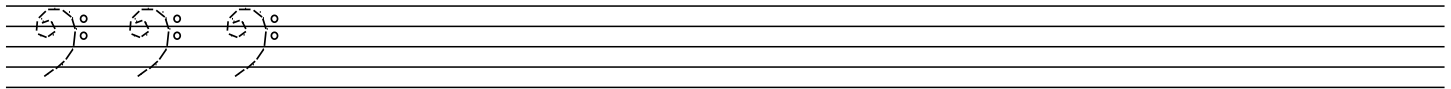
A **clef** appears at the beginning of each staff. The clef shown here is a **bass clef**.



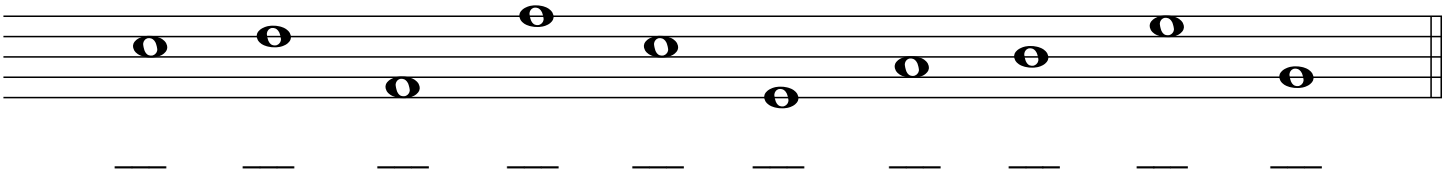
Each note on the bass clef staff has a letter name.



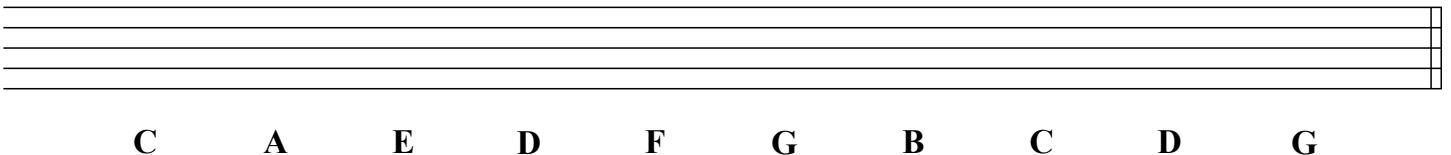
1. Practice drawing the bass clef sign by tracing over the guidelines. Draw five more in the remaining space.



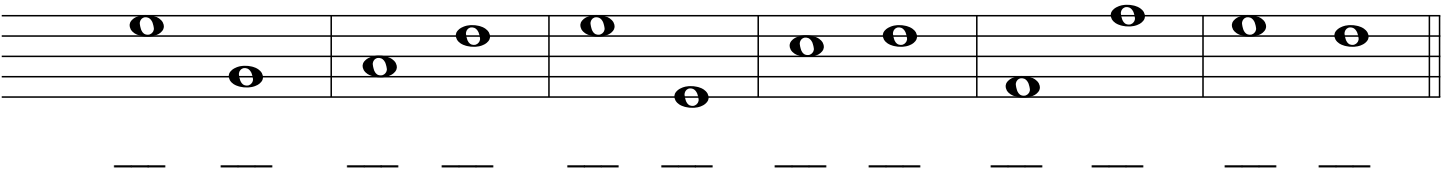
2. Draw a bass clef at the beginning of the staff and write the letter name of each note.



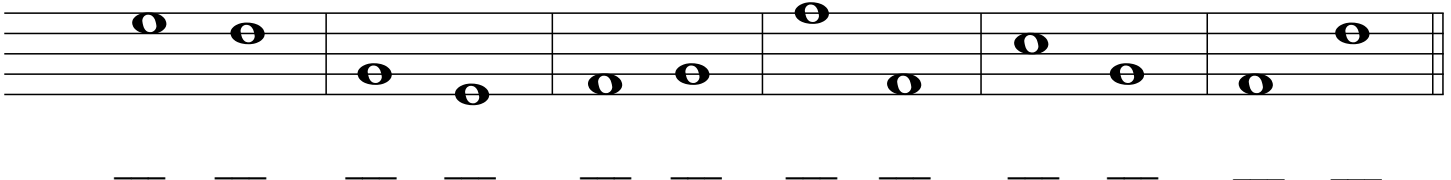
3. Draw the bass clef at the beginning of the staff and then draw the notes indicated.
If a note can be drawn in more than one place on the staff, choose which one you want to draw.



4. Draw the bass clef at the beginning of the staff.
Write the letter name for each note, then circle the higher note in each pair.



5. Draw the bass clef at the beginning of the staff.
Write the letter name for each note, then circle the lower note in each pair.



Bass Clef - Ledger Lines

Ledger lines can be used to extend the upper and lower ranges of a staff.

This example includes notes which can be written above and below the bass clef using **ledger lines**.

C D E F B C D E

1. Draw a bass clef at the beginning of the staff and write the letter name of each note.

2. Draw a bass clef at the beginning of the staff and write the letter name of each note.

3. Draw the indicated notes. Use ledger lines to draw the specified number of pitches without duplication.

Example

3 Cs

3 Ds

2 As

2 Bs

2 Fs

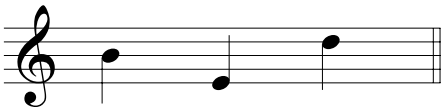
2 Bs


2 Gs

3 Cs


Musical Words - Treble Clef I

Each group of notes spells a word.
Write the word that each group spells.

Example 
B E D

1 

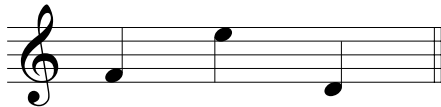
— — —

2 


— — —

3 


— — —

4 


— — —

5 


— — —

6 


— — — —

7 

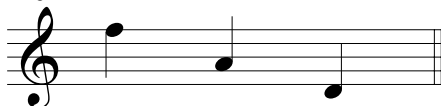
— — — —

8 


— — —

9 


— — —

10 

— — —

11 


— — — —

12 

— — — —

13 


— — —

14 

— — —

15 


— — —

16 

— — — —

17 


— — — —


18 

— — — —


Musical Words - Bass Clef I

Each group of notes spells a word.
Write the word that each group spells.


Example 
B E D

1 


— — —

2 


— — —

3 


— — —

4 

— — —

5 

— — —

6 


— — —

7 


— — —

8 


— — —

9 


— — —

10 


— — —

11 


— — —

12 


— — —

13 


— — —

14 


— — —

15 


— — —

16 

— — —

17 

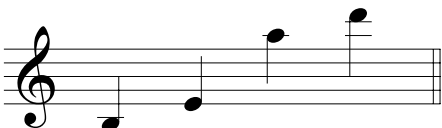
— — —

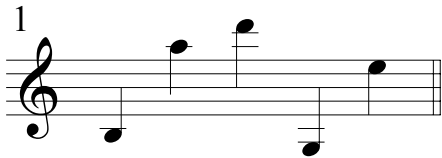
18 

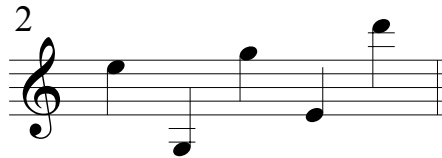
— — —

Musical Words - Treble Clef II

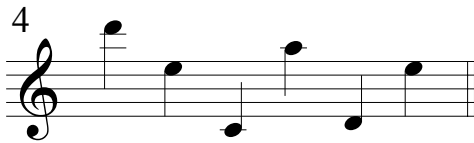
Each group of notes spells a word.
Write the word that each group spells.

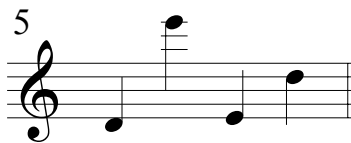
Example 
B E A D

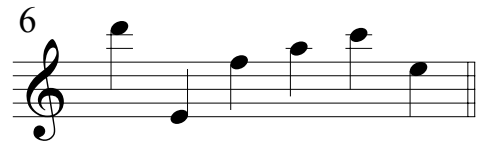
1 

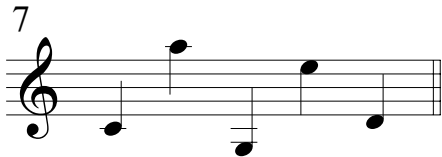
2 

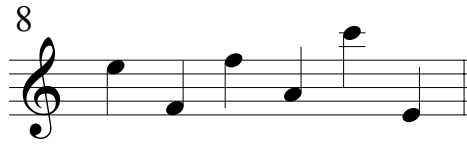
3 

4 

5 

6 

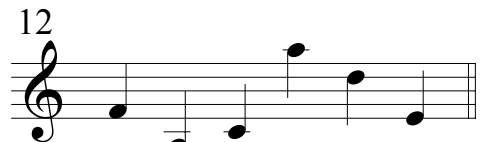
7 

8 

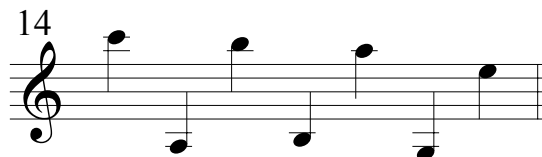
9 

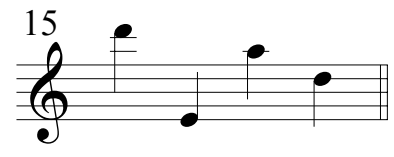
10 

11 

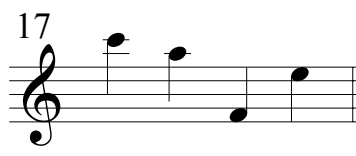
12 

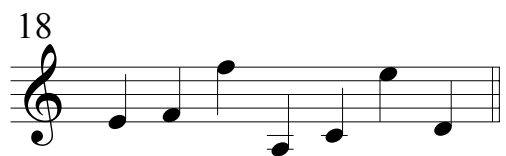
13 

14 

15 


16 

17 

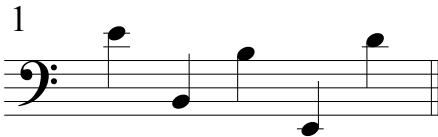
18 

Musical Words - Bass Clef II

Each group of notes spells a word.
Write the word that each group spells.

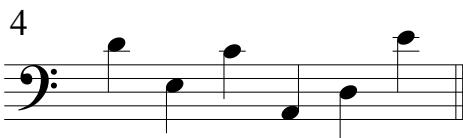
Example 

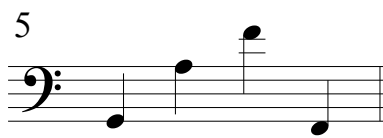
D E E D

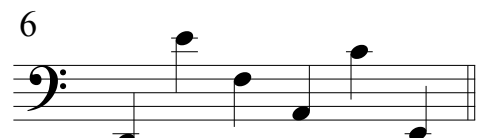
1 

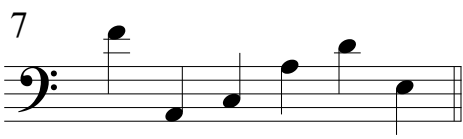
2 


3 

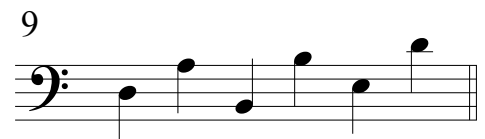
4 

5 

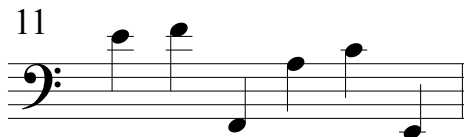
6 

7 

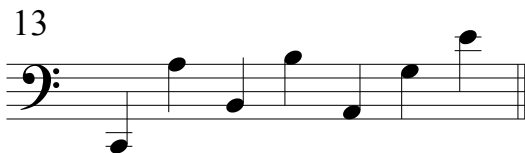
8 

9 

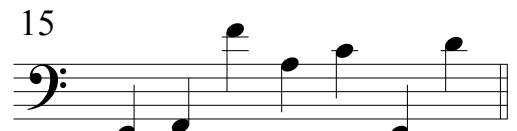
10 

11 

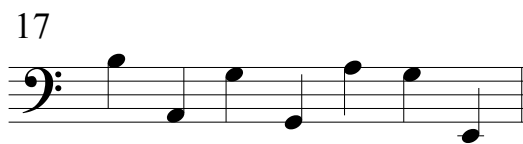
12 

13 

14 

15 

16 

17 

18 