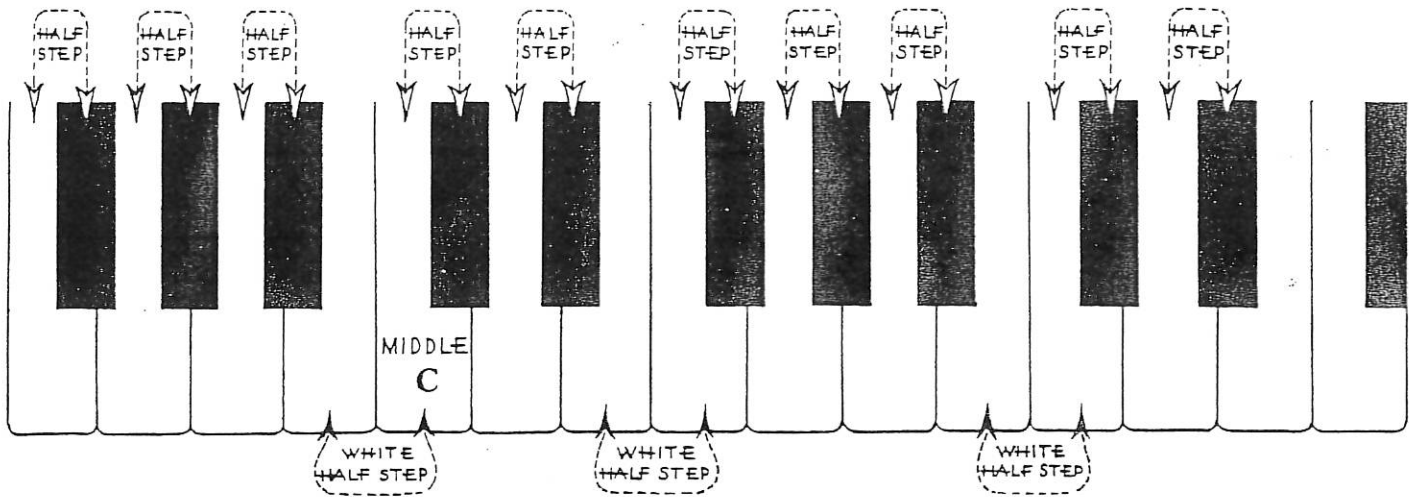


Half Steps

Pupil's Name _____

Grade (or Star) _____



A HALF STEP is the distance between any key and THE NEXT NEAREST KEY.

Most HALF STEPS lie between a white key and a black key.

There are, however, two WHITE HALF STEPS — one between B and C and the other between E and F. Study them on the chart above and locate them on your piano keyboard.

Chromatic and Diatonic Half Steps

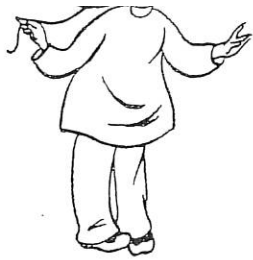


CHROMATIC
HALF STEP

When both notes of the Half Step have the SAME LETTER-NAME, the interval is called a CHROMATIC Half Step.

DIATONIC
HALF STEP

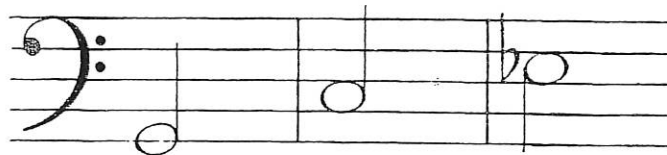
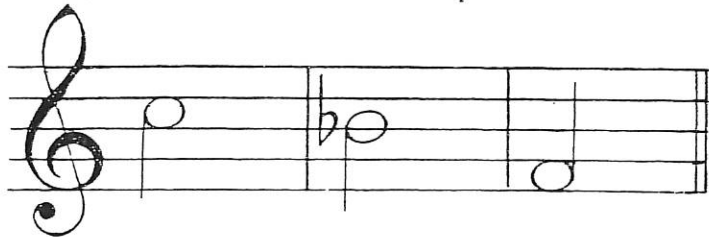
When the notes of a Half Step have TWO DIFFERENT NAMES, the interval is called a DIATONIC Half Step.



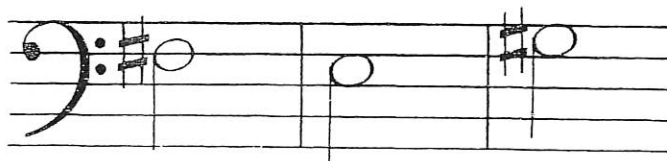
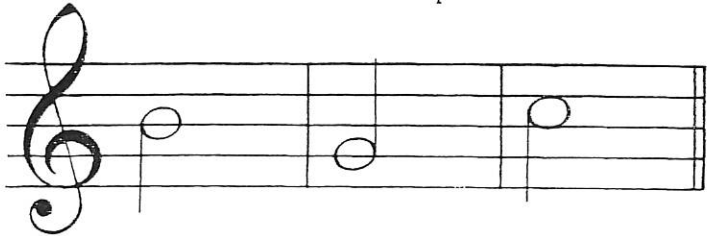
WATCH YOUR STEP!



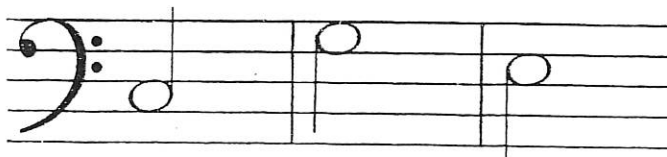
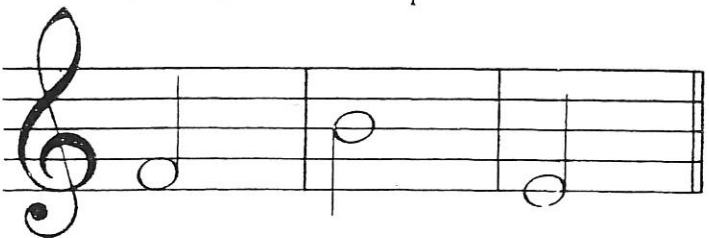
2. Write a Chromatic Half Step UPWARD from each of the following.



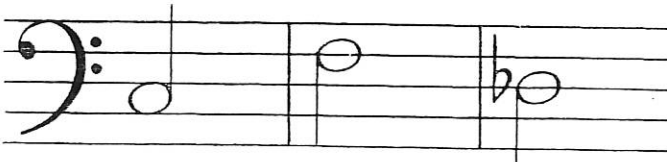
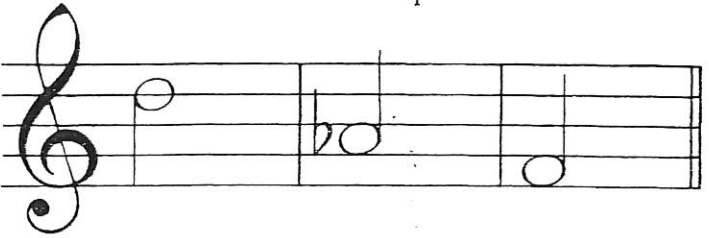
3. Write a Chromatic Half Step DOWNWARD from each of the following.



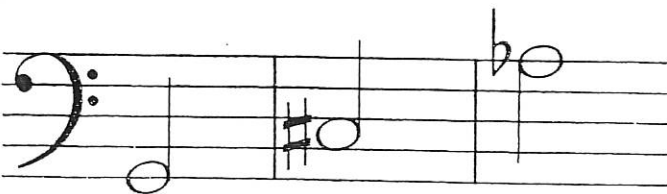
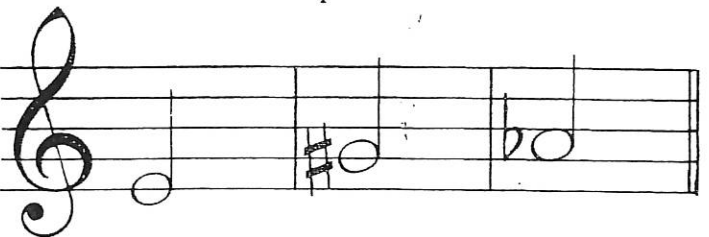
4. Write a Diatonic Half Step UPWARD from each of the following.



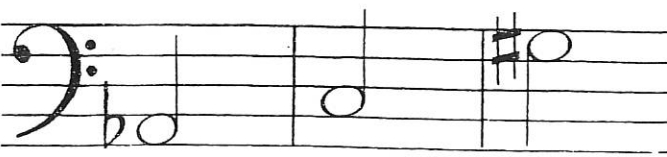
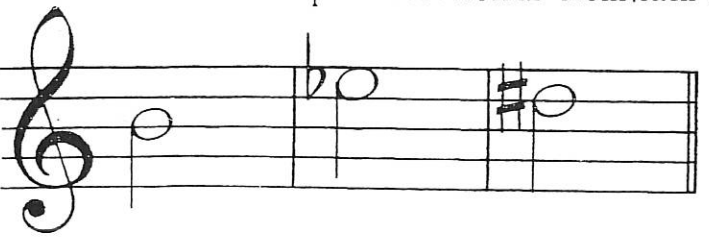
5. Write a Diatonic Half Step DOWNWARD from each of the following.



6. Write a Whole Step UPWARD from each of the following.



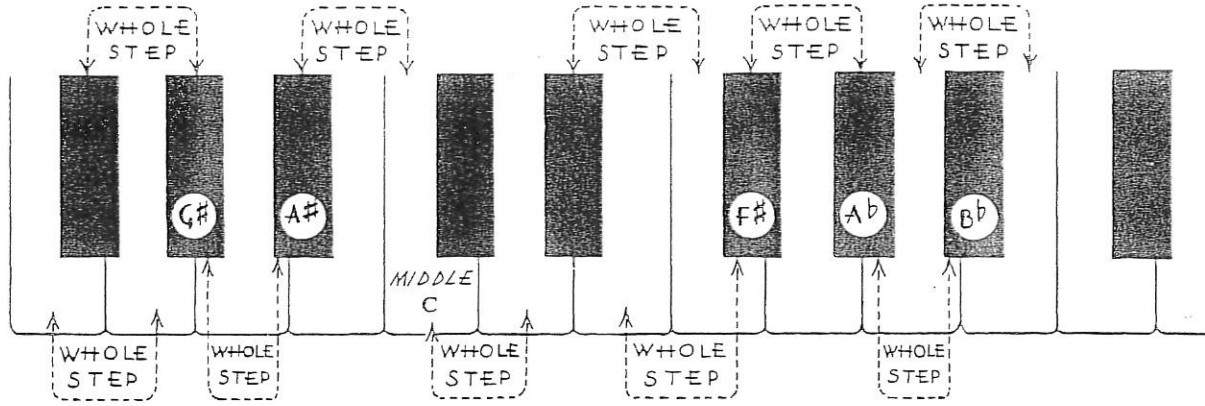
7. Write a Whole Step DOWNWARD from each of the following.



Whole Steps

Pupil's Name _____

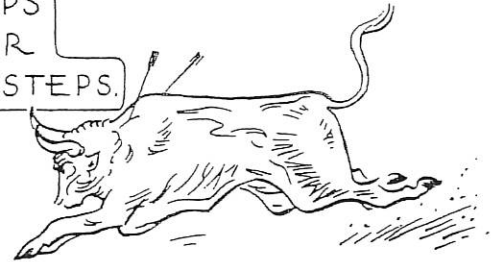
Grade (or Star) _____



A WHOLE STEP is twice as big as a Half Step — therefore there will always be one key (either white or black) lying in between.



MARK THE WHOLE AND HALF STEPS IN THE FOLLOWING. USE W FOR WHOLE STEPS AND H FOR HALF STEPS.



1.

